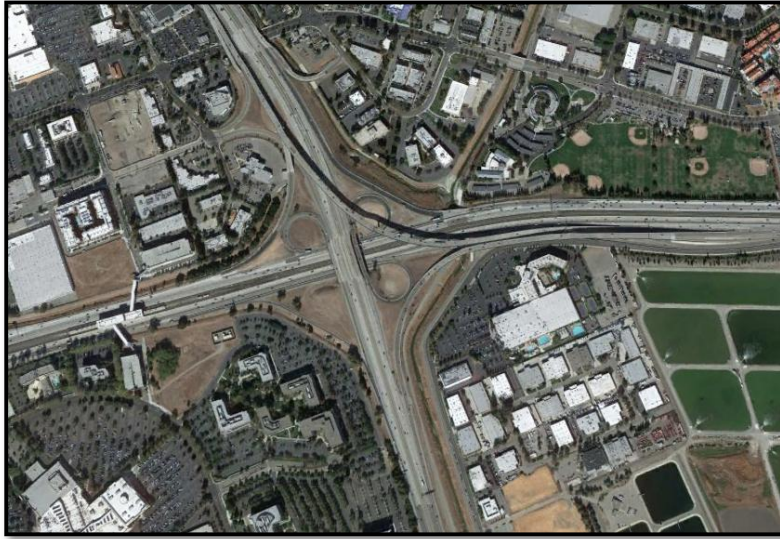


## B-1. I-580/I-680 INTERCHANGE (WESTBOUND TO SOUTHBOUND)



### TVTC PROJECT SPONSOR

City of Dublin

### LEAD AGENCY

Alameda CTC

### OTHER INVOLVED PARTIES

Caltrans and City of Pleasanton

### PROJECT DESCRIPTION *(UPDATED FALL 2015)*

Project B-1 is located at the I-580/I-680 Interchange in Alameda County. The proposed

project limits are from 1,700 feet east of the Hacienda Drive Overcrossing to 2,000 feet west of the San Ramon Road Overcrossing along I-580, and from the Amador Valley Boulevard Undercrossing to 3,400 feet south of the Stoneridge Drive Overcrossing along I-680.

### STATUS

A Project Study Report-Project Development Support (PSR-PDS) was completed and approved by Caltrans in 2009.

The next steps in project development will be to:

- Review the existing PSR-PDS to validate the information
- Identify the need for updates/revisions to identify financially feasible improvements to address the latest safety, operational, and congestion issues

The Alameda CTC's 2014 Transportation Expenditure Plan (TEP), approved as part of Measure BB, includes \$20 Million in funding for I-580/I-680 Interchange improvements. Further project development is being explored. Alameda CTC is working with local, regional, and state agencies in identifying funding.

### PHASING AND SCHEDULE

The phasing and schedule for this project have not been defined.

## COST ESTIMATE AND FUNDING SOURCES

---

(To be updated based on further project development work)

<b>Cost (Millions, 2015)</b>	<b>\$1,478.15</b>
Funding (Millions, 2015)	
Measure BB	\$20.00
TVTDF	\$1.00
<b>Total Funding (Millions, 2015)</b>	<b>\$21.00</b>
<b>Total Funding Shortfall (Millions, 2015)</b>	<b>\$1,457.15</b>